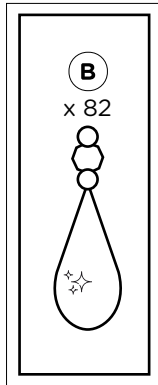
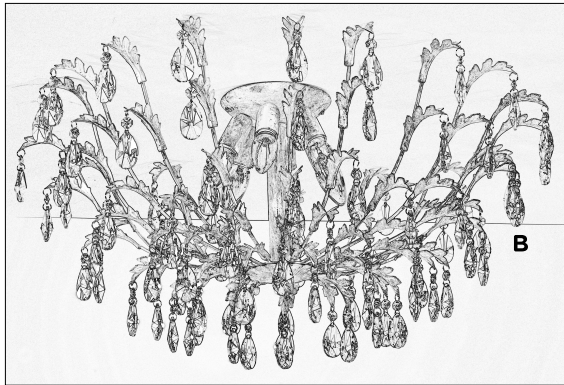
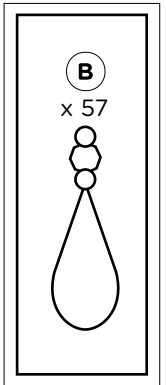
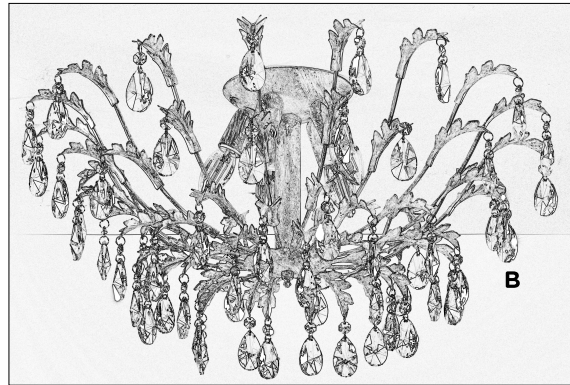


# Istruzioni montaggio cristalli Crystals assembly instructions

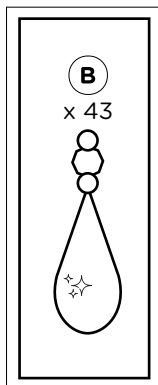
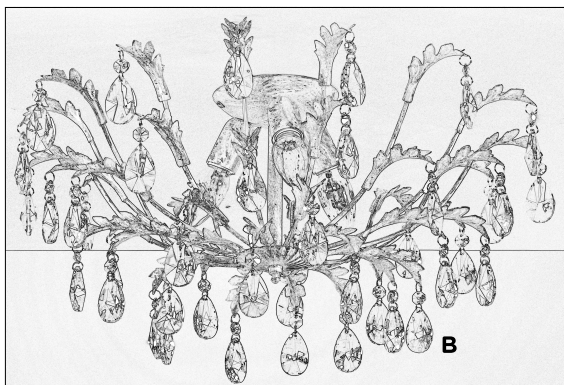
4864/PL6



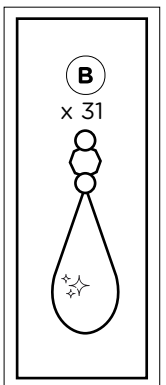
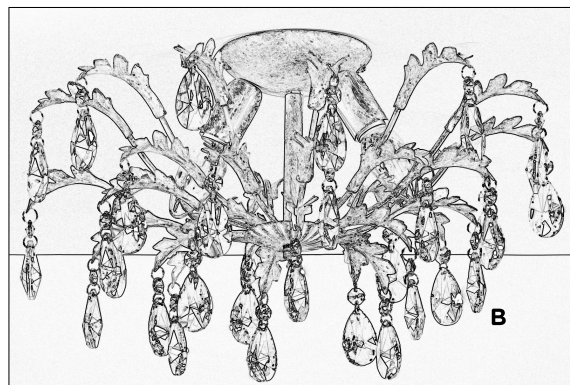
4864/PL5



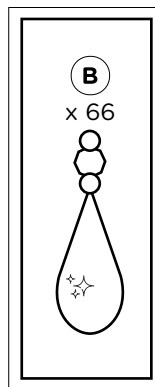
4864/PL3



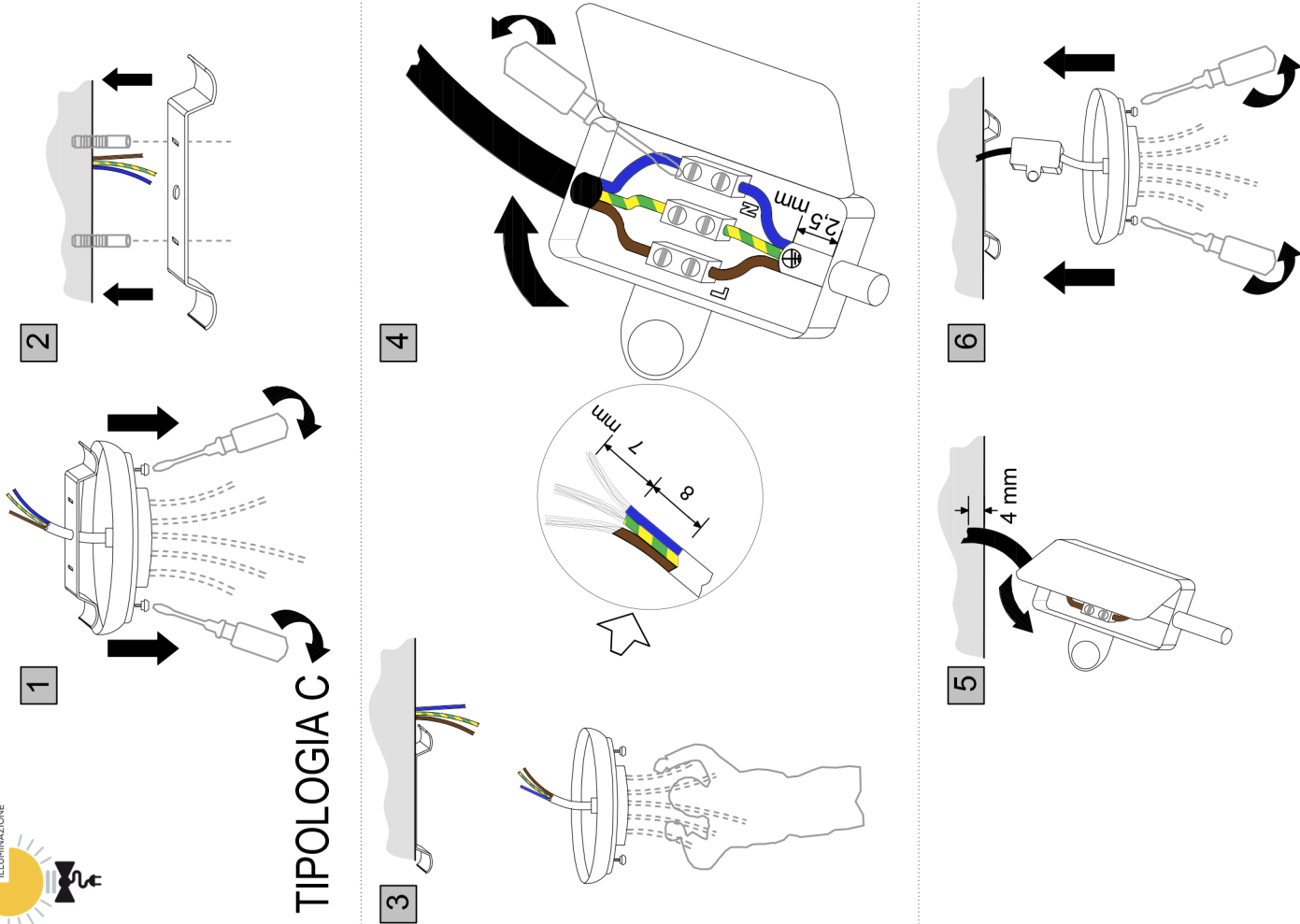
4864/PL2



4864/5



## TIPOLOGIA C



	<p><b>ISTRUZIONI DI MONTAGGIO.</b> Togliere la corrente dalla rete, staccare la spina. Montare l'apparecchio seguendo il disegno allegato e la numerazione rispettando le avvertenze.</p> <p>1) Fermare la staffa con le viti. 2) mettere il tubo nella parete e cablare. 3) Chiudere la scatola morsetti. 4) bloccare il rosone) il corpo con rondelle dentate e viti. B) Inserire i diffusori e le lampadine con i Watt indicati e solo dopo chiudere l'interruttore) inserire la spina.</p> <p>1) Posizionare l'apparecchio su un piano stabile 2) Inserire il diffusore (se c'è). 3) Inserire la lampadina con i Watt indicati e solo dopo riattivare la corrente dalla rete l'riattaccare la spina.</p>	<p><b>MONTAGE INSTRUCTIONS</b> – Turn off the power from the mains, pull the plug. Mount the fixture following the design shown here and in the order of the number, respecting the cautions.</p> <p>1) Stop the bracket with screws. 2) put the pipe in the wall and do the wiring. 3) Close the terminal box. 4) lock the canopy, the body to the bracket with toothed washers and screws. B) Insert the diffusers and the bulbs with Watt indicated and only after closing the switch, plugging.</p> <p>1) Place the appliance on a stable floor or table. 2) Insert the diffusers (if any). 3) Insert the bulb with Watt indicated and only after turn on the power from the mains, the plug.</p>
	<p><b>AVVERTENZE DI UTILIZZO E MANUTENZIONE</b></p> <p>L'apparecchio d'ILLUMINAZIONE è sicuro solo se usato all'interno e in ambienti asciutti, privi di liquidi, gas e polveri, non coperto e installato da persona addestrata, nel rispetto della destinazione d'uso e delle norme di manutenzione; non commettere quando è nell'imbollo. L'apparecchio non è un giocattolo; i materiali dell'imbollo possono essere pericolosi (rischio di soffocamento...), non lasciarli a portata dei bambini. <b>Conservare le istruzioni per la manutenzione.</b></p> <p>A fine vita è "Rifiuto di Apparecchio Elettrico e Elettronico" (RAEE). Non gettare nell'indifferenziato. Riciclare e rispettare l'ambiente e la legge (DIR96/02/CEE); informarsi sui punti di raccolta differenziata previsti dalla legge (l'abuso è punibile. Art 50 e seg Dlgs 22/97).</p> <p>CE significa "apparecchio conforme a Dir./Reg. 2014/30/UE mod. 2006/95/CE (LVD), 2014/30/UE mod. 2004/108/EC (EMC), 2008/25/EC (Photobiological safety), 2009/125/UE-2010/30/UE-Reg.2012/874-EUP.2012/194 (Energy Label), 2012/19/UE (RAEE), Reg.1907/2006/CE (REACH) i.e. Has passing the testing requirements of high safety, health and environmental protection provided by the EU</p>	<p><b>WARNING AND MAINTENANCE INSTRUCTIONS</b></p> <p>The LIGHTING fixture must be used only indoor and installed in dry location, free of liquids, gas and dust, not covered, and installed by qualified technicians and used only for the purpose for which it was designed and in respect of maintenance instructions; do not connect while it is in the packaging. The luminaire is not a toy; packing materials may constitute a hazard (risk of suffocation, abrasion, etc), and must not be left within reach of children. <b>Keep a copy for maintenance.</b></p> <p>At the end of its life it's "Wast Electrical and Electronic Equipment" (WEEE). Do not throw into the undifferentiated. Environment and law (DIR.96/02/EEC) respect enquiry and recycle in the separate collection (The abuse at EU is punishable).</p> <p>CE means "Apparatus complying with Dir. / Reg. 2014/30/UE mod. 2006/95/CE (REACH) i.e. Has passing the testing requirements of high safety, health and environmental protection provided by the EU</p> <p>To replace immediately by a qualified, the defective/cracked parts with original parts, but only cold and open the main switch, plug removed; then close, insert the plug, only with lamps included. Insert only the lamps marked with the V and W and/or mA specified, to avoid overheating. For cleaning always use a dry cloth and do not use harsh detergents.</p> <p>For devices with earthing (Class I), connect the power cord to an outlet with a ground.</p> <p>For Fixture with class II insulating rating (IEC417). Exposed metal parts must not come into contact with parts of the electrical system connected to a ground conductor.</p> <p>For Halogenlamp. 1-Symbol for use self-shielded lamp only. 2-To avoid fire risk and UV radiation excess, do not use lamp for closed luminaires only.</p> <p>With this symbol, respect the minimum distance indicated between lamp and illuminated objects."</p> <p><b>IMPORTANT WARNING:</b> check the weight and make sure the ceiling or walls are able to maintain weight with a large safety margin.</p> <p>The enclosures are compliant with standard EN 60695-2-12:2001 and pass the glow wire test at 650 ° C</p> <p>If the power terminal block is not included or not mounted. Use the terminals block box closed and certificate. "The installation may require qualified personnel".</p> <p>The source of the light beam should not be viewed directly, nor with optical instruments that concentrate the beam light beam.</p> <p>In rosettes with terminal block with box and tubes, the length of the mains cables must ensure that the insulating pipe is inserted into the wall to 4 mm min.</p> <p>For Class II luminaires, if the cord cable must be connected to the terminal box, the additional insulation must enter the pits to 2.5 mm MIN (stripping 8 mm max).</p>
	<p><b>LAMPADINE E INFORMAZIONI ETICHETTA ENERGETICA</b></p> <p>Classe Energetica EEL secondo la Direttiva UE 125/2009/CE Reg. 874 &amp; 1194/2012/UE</p> <p>Reg. CE 244/2009 - Lampade per sostituzione: efficienza energetica complessiva, apertura e regolazione della luce apparecchi, sono determinate dalla progettazione dell'apparecchio.</p>	<p><b>LAMP BULB AND ENERGY LABEL INFOS</b></p> <p>Energy Class EEL according to EU Directive 125/2009/CE Reg. 874 &amp; 1194/2012/UE</p> <p>Reg. EC 244/2009 - Lamps for replacement: the overall energy efficiency, the light distribution and the dimming of the devices that use these lamps are determined by the design of the device</p>
	<p>Contattateci per altre informazioni e assistenza.</p>	<p>Please contact us for more information and assistance.</p>
	<p>Für andere Sprachen kontaktieren Sie uns bitte. Diğer diller için bize ulaşın. Diğer diller için bize ulaşın. Diğer diller için bize ulaşın.</p>	<p>For other languages contact us please. Diğer diller için bize ulaşın. Diğer diller için bize ulaşın. Diğer diller için bize ulaşın.</p>
	<p><b>STEFI ILLUMINAZIONE SRL - Via Prov.le per Fornacette, 25 - 56010 Vicopisano (PI) ITALY - www.stefilluminazone.it - info@stefilluminazone.it</b></p>	<p><b>STEFI ILLUMINAZIONE (PI) ITALY - www.stefilluminazone.it - info@stefilluminazone.it</b></p>